



The Regina District Dressage Association

Presents

Centre Line to Summertime

June 3-4, 2023

Judge – Kim King, Saskatoon, SK

Steward – Dr. Jackie Taylor, Nipiwana, SK

Location – Moose Jaw Exhibition Company Ltd
250 Thatcher Drive E
Moose Jaw, SK, S6J 1L7

SHF HERITAGE & PRAIRIE CUP SHOW

EQUESTRIAN CANADA BRONZE SHOW

WSDAC PERMIT SHOW

The show will be run outside. Please note the indoor ring will be used only for inclement weather. Horses can be hauled in starting Friday June 2, 2023 after 1:00pm.

OFFICIALS

Show Chairperson – Charlene Roenspiess, Regina, SK

Show Secretary – Cassandra Adam

Show Committee – Jasmine Gerein, Cassandra Adam, Charlene Roenspiess, Jacquie Prentice, Deanna Slywka, Alyssa Parker, Nicole Engbert

Vet on Call – Peak Veterinary Health – 306-692-4800

ENTRIES

Entry Closing Date – Friday May 26, 2023

Entry forms can be emailed to reginadistrictdressage@gmail.com with e-transfer as the payment option

OR

Entry forms and cheques can be sent to:

RDDA June Show entries

c/o Cassandra Adam

123-5059 James Hill Road

Regina, SK

S4W 0B9

Entries are not considered complete until payment is received

*E-transfers accepted to reginadistrictdressage@gmail.com (Password set to “dressage” if required)

*Cheques payable to Regina District Dressage Association

Junior riders qualify as all individuals who are 18 years of age and under as of December 31, 2023.

Riders must hold a current SHF membership (or membership from another provincial sport governing body) plus a minimum of an EC Bronze membership, or WSDAC membership depending on the classes entered.

Canadian horses competing in an EC Gold show are required to hold an EC Horse Recording and have paid the EC Horse Recording Annual Activation Fee to complete.

Entries will be processed in the order that they are received. The show committee reserves the right to limit to 8 hours of tests per day combined amongst the various shows. Late entries will be accepted, space permitting with a \$40 late fee.

Cancellations – after the official closing date will be refunded entry fees minus administration fee upon the receipt of a vet certificate of disability or a doctor's certificate. Competitors cancelling after 5pm June 3, 2022 will receive no refund.

Heritage and Prairie Cup approved classes will count towards year end awards. Please ensure your SHF membership is current and that you have nominated if you are interested in accumulating points for the awards. To qualify for Heritage Provincial Finals September 22 - 24, 2023, you must attend a minimum of two Heritage shows and have placed in the top 5 in a division to be eligible.

GENERAL INFORMATION

The show office will be open: 6-8pm preceding day and 1 hour prior to the start of the show day.

Tentative Schedule: 8 am start Saturday, 8 am start Sunday. Classes may not run in order.

The show committee reserves the right to make changes to the show schedule. Classes may be canceled, split or combined due to lack of sufficient entries. The show committee also reserves the right to limit entries or make any necessary changes to the prize list or program. Competitors will be notified as early as possible. The onus is on the competitor to familiarize themselves with such changes.

Warm up in competition arena is available at a cost of \$15 for 15 minutes or \$25 for 30 minutes Friday afternoon and evening. All warm up requests will be scheduled on a first come, first serve basis. The warm up schedule will be e-mailed out by Wednesday prior to the show.

Shavings will be available to pre-order on the entry form. There will be a surplus of shavings on the grounds, which will be sold on a first come first serve basis over the weekend.

Show numbers on your horse must be worn, and visible, at all times outside of the stall. A limited amount of show numbers will be available to rent from the show office, please indicate on your entry if you require one.

All persons providing coaching while on the competition grounds must have a current EC Coach Status (A102.2). The name and EC number of each coach must be included on the entry form for this event.

All competitors are asked to work one volunteer shift per entry during the show and will be organized on a sign-up basis in order to work into each competitor's schedule. No shift will last longer than 1 hour and may be worked by an individual appointed by the rider. If you feel you are unable to volunteer, you may forfeit the \$30 (per entry) to void this requirement. Volunteer deposits will now be included in the total entry fees, and reimbursement of the deposit will be provided in cash at the show once show numbers are returned and volunteer time has been completed. Entries will **NOT** be considered complete if this fee is not paid with your entry.

Horses **MUST** be stabled for the day(s) of the competition. It is prohibited to tie a horse to a trailer. Stabling is available for \$70 for the weekend.

Dogs must be leashed at all times and kept away from the competition arena(s).

Copies of the tests are available at www.equinecanada.ca. If you are unable to access the website, please contact the show secretary for copies of the tests. Western Dressage tests are available at www.westernstyledressage.ca.

The Regina District Dressage Association (RDDA) competition is a sanctioned competition member of each of the following:

- Equestrian Canada (EC), 2451 Riverside Drive, Ottawa, ON K1H 7X7
- Saskatchewan Horse Federation (SHF), 300-1734 Elphinstone Street, Regina, SK S4T 1K1
- Western Style Dressage Association of Canada (WSDAC), 18937 Hill Road, Morpeth, ON N0P 1X0

It is a condition of entry that Regina District Dressage Association, the show committee, nor the facilities, will be held responsible in any way for damage, injury or loss to persons, horses, or property of spectators or competitors.

EQUINE VACCINATIONS & BIOSECURITY

The following Health Requirements must be sent with entry forms and fees:

1. **Proof of Negative Coggins** is required and must be dated within the last 6 months.
2. **Proof of Vaccinations** – Equine Influenza and EHV 1 & 4 (Rhino) within the last 6 months (180 days) but not within 7 days of arrival to the show grounds.

Horses not presenting proof of Vaccinations and/or negative Coggins within the last 6 months will not be allowed to compete. All horses attending Equestrian Canada sanctioned competitions must have met the requirements of Article A519, Vaccinations. See Rules of Equestrian Canada, Section A, General Regulations, Article A519, Vaccinations. (A602.8)

BIO-SECURITY MEASURES

Protecting the health of your horses is of the utmost importance. In addition to the Bio-security Protocol for Vaccination, RDDA has compiled this list of Bio-Security Regulations for decreasing the risk of exposure or spread of disease.

1. **Be sure to adhere to Bio-Security practices**, it's simple steps we all can take to keep horses healthy!
2. **Horses Temperature** is an easy way to monitor your horse. Take and record your horse's temperature twice daily when it is at rest and NOT immediately following exercise and trailering. Horse's temperature should be below 102°F.
3. **Monitor your horse(s)** and contact Western Veterinary if you notice any unusual symptoms. Any sick or suspect horses are to be reported to the veterinarian and will be taken to isolation stalls for testing and observation.

DIRECT AND INDIRECT CONTACT BETWEEN HORSES AND PEOPLE

The most common path for spreading germs and disease is contact among horses, humans and other animals. Bodily fluids such as nasal discharge, saliva and sweat can carry germs which are easily transmitted from horse to horse through direct and indirect contact.

Limit **horse-to-horse** contact, **horse-to-human-to-horse** contact, **horse-to-dog (other animal)-to-horse**, and/or **horse-to-dog-to-human-to-horse** contact.

1. **Dogs must be on a leash controlled by a human.** Dogs can be a leading cause of the spread of germs – horses nuzzle the dog, people pet the dog then pet the next horse – and before you know it, the germs have been spread. Please be courteous and clean up after your dogs on the grounds.
2. **Restrict unnecessary movement of horses out of their aisle or barn.** Coming into nose-to-nose contact with other horses or soiled surfaces can spread germs.
3. **Don't let horses make nose-to-nose contact** with horses from other barns when in common areas such as wash racks, at the rings, or while grazing.
4. **Do not touch or pet, or feed treats to horses** from other barns unless you have the owner/rider's permission. Be mindful that you may be spreading germs from one horse to another when you do this.

EQUIPMENT HANDLING

Soiled equipment is another common path for spreading germs and disease. Nasal discharge, saliva, sweat, and even soiled bedding can carry microbes and spread them via shared items such as tack, equipment, hoses, buckets, grooming supplies and towels.

1. **Do not let water hoses touch buckets when filling.** Contact with a contaminated surface on a water bucket can be easily transmitted to the next bucket contacted.
2. **Do not allow horses to drink from the hose.**
3. **Do not share water or feed buckets.**
4. **Have hand sanitizer readily available** and use it between grooming/tacking up horses. Keep it handy in the grooming stall and in your grooming box at the ring
5. **Use clean brushes and towels on each horse.** If you don't have enough brushes for each horse to have his own set, be sure to wash them often.
6. **Don't share tack, equipment or grooming supplies,** especially bits and bridles, unless they are cleaned between each use.

COVID-19 PROTOCOLS

The COVID-19 health and safety protocols will be followed as outlined by Moose Jaw Exhibition Company Ltd. and the Saskatchewan Health Authority (SHA) at time of competition. Guidelines currently do not require social distancing or masking; however, if SHA regulations change, Moose Jaw Exhibition Company Ltd. will follow and enforce most current rules at the time of the show.

CONCUSSION PROTOCOL

In the event of a fall/accident where a concussion can be reasonably suspected, the competitors must receive medical clearance by qualified medical personnel onsite before continuing to compete. The competitor is not permitted to re-mount until the assessment has been completed (A101.2).

The competitor is solely responsible for ensuring the onsite medical assessment takes place. Should a competitor refuse to be evaluated, they will be disqualified from the competition (A101.4).

If onsite qualified medical personnel suspect a concussion or believe the competitor may be at risk of concussion due to the nature of the fall or impact, the competitor will be suspended from competition and placed on Medical Suspension List until medically released (A101.4).

Competitors will remain on the EC Medical Suspension List until they submit an EC Return-to-Sport Form signed by a licensed physician to EC (A101.7).

No competitor shall compete at EC sanctioned competitions while on the EC Medical Suspension List and competition organizers may refuse entry to anyone currently on the list (A101.8).

In the event that paramedics need to be called in, the cost will be the responsibility of the competitor or their parent/guardian in the case of a junior rider. The costs will not be the responsibility of the RDDA.

STATEMENT OF PRINCIPLES

Equestrian Canada (EC), the national equestrian federation of Canada, supports adherences to humane treatment of horses in all competitions under its jurisdiction. Equestrian Canada requires all persons shall be committed to:

- Upholding the welfare of horses, regardless of value, as a primary consideration in all activities.
- Requiring that horses be treated with kindness, respect, and compassion, and that they never be subjected to mistreatment.
- Ensuring that all Equestrians including owners, trainers and competitors, or their respective agents, use responsible care in the handling, treatment and transportation of their own horses as well as horses placed in their care for any purpose.
- Providing for the continuous well-being of horses by encouraging routine inspection and consultation with health care professionals and competition officials to achieve the highest possible standards of nutrition, health, comfort and safety as a matter of standard operating procedure.
- Providing current information on Code of Practice for the Care and Handling of Equines and other equine health and welfare initiatives.
- Continuing to support scientific studies on equine health and welfare.
- Requiring owners, trainers, and exhibitors to know and follow their sanctioning organization's rules and to work within industry regulations in all equestrian competitions.
- Actively promoting the development of and adherence to competition rules and regulations that protect the welfare of the horse.

The standard by which conduct or treatment will be measured is that which a person who is informed and experienced in generally accepted equine training and competition procedures would determine to be neither cruel, abusive, nor inhumane.

Exhibitors, Judges, and Show Officials are responsible for a knowledge of the rules specified in the RULES OF EQUESTRIAN CANADA. Full details of Horse Show Operation, Equestrian Canada (including F.E.I.) Rules and other vital information or in the Rule Book of exclusive use of National Shows. Adult Amateur, Junior, and Open Equestrian Canada Competitions (must have purchased a competitive license) each receive a copy of the Rule Book and are eligible to count points won at National Equestrian Canada competitions for annual awards.

RULES

1. **IT IS THE ULTIMATE RESPONSIBILITY OF THE COMPETITOR TO ENSURE THAT HE/SHE COMPLIES WITH THE RULES.** A rider may approach the steward prior to each test to ensure that dress and equipment are in accordance with the rules. It is the responsibility of the rider to report directly to the steward after completion of each test.
2. Bronze must pay a mandatory DC Levy of \$10 and an Equestrian Canada drug fee Bronze \$4..
3. Any horse entered in a Bronze competition may be randomly selected for equine medication control testing while at the event location (A602.5). This includes horses entered in the Western Dressage classes.
4. Competition numbers on your horse must be worn, and visible, at all times outside of the stall.
5. Junior riders must have permission to participate in the show as indicated by the signature of a parent or guardian.
6. Exhibitors must be ready to compete when scheduled.
7. **ALL COMPETITORS MUST WEAR PROPERLY FITTED, APPROVED PROTECTIVE HEADGEAR WITH A SAFETY HARNESS CORRECTLY SECURED AT ALL TIMES WHILE MOUNTED ON THE COMPETITION GROUNDS; THIS INCLUDES WSDAC RIDERS.**
Approved headgear must be certified by SEI or another testing body that it meets the American Society for testing materials standard or the BSI standard. (A905)
8. **Cross Entering:** Horses may be ridden by more than one rider at a competition, but not more than once in a category, i.e. a horse may enter with a junior in the Junior and/or Open Category at one level. The same horse with a senior rider may enter in Adult Amateur/Open Category in the next consecutive level. (E7.11.8)
9. For all EC competitions, athletes wishing to compete in two categories of a division (e.g. Junior/Open or Amateur/Open) will pay two entry fees, but may ride one test; their score will count for both categories (E7.1.4)
10. In the designated warm up arena, running martingales are permitted to be used on snaffle reins of the bridle. Single direct side and running/Vienna side reins (when lunging an unmounted horse with one lunge line) are permitted. Boots and bandages may be worn anywhere but only permitted in EC Bronze competitions. Martingales (other than running), bit guards, any kind of gadget such as bearing, running, or balancing reins, ear plugs, under penalty of elimination are **STRICTLY FORBIDDEN ON THE SHOW GROUNDS AT ANY TIME DURING THE COMPETITION** and may lead to elimination or disqualification at the discretion of the ground jury. (E4.9)
11. Maximum four (4) tests per day for Introductory Level, Training Level, First Level and their Freestyle – this also includes all Western Dressage Levels. Maximum three (3) tests per day (including Freestyle) for Second Level, Third Level, Fourth Level and all FEI Level tests. (E 11.9.1)
12. A horse/pony may compete with a substitute athlete providing the athlete is eligible to enter the class and pays any substitution fee required by the show organizer. An athlete may compete with a substitute horse/pony providing the horse/pony is eligible to enter the class and the

athlete pays any substitution fee required by the show organizer. Contact the show secretary for details.

13. Hors Concours are NOT allowed in this competition.

14. **Scorings and Placings:** All scores in dressage tests are calculated to the third decimal. Class ribbons will be given by division of rider (Junior/Senior/Gaited). Ribbons will be awarded to 6th place. Any horse receiving less than 50.000% in a test will not be eligible for ribbons, prizes, etc.

English Dressage: Any horse receiving less than 40.000% in a test will be eliminated from that class. When only one horse in a class, ribbons will be awarded with the following percentages:

First: 60% or higher;

Second: 57% to 59.999%;

Third: 54% to 56.999%;

Fourth: 51% to 53.999%

Western Dressage: WSDAC rules will apply for scoring and placings at the show, with the exception of results for Heritage Circuit & Prairie Cup placings where SHF rules will apply.

15. WSDAC tests and rules will be followed for these tests. In accordance with WSDAC attire rule 6.01b, all riders are required to wear a helmet by the show organizers.

16. Depending on entries and at the discretion of the show committee, EC Introductory, Training, and WSDAC Basic and Level 1 classes may be run in the 20 x 40 arena. All other classes will be run in the 20 x 60 arena.

17. **Emergency Plan:** In the event of human/horse injury during the event, please notify the show secretary immediately and they will contact all emergency personnel.

18. **Show Championships** - will be decided based on the highest average percentage using the top two scores earned by a horse/rider combo in their respective level over both days. Championship prizes will not be divided with respect to Junior/Open/Gaited divisions.

*** Champion & Reserve Champion must have a score of at least 50.000% of the total marks. In the event there is only one rider in a division, they must have a 60.000% plus to be considered a Champion. ***

19. The RDDA Centreline to Summertime competition is sanctioned as a: Bronze competition of Equestrian Canada, 2451 Riverside Drive, Ottawa, ON, K1H 7X7 and is governed by the rules of EC." (A602.1)

20. Every class offered herein is covered by the rules and specifications of the current rules of EC and will be held and judged in accordance with the EC rule book (A602.2)

21. Per Article A801, every entry at an EC-sanctioned competition shall constitute an agreement by the person responsible that the owner, lessee, trainer, manager, agent, coach, driver or rider and horse shall be subject to the EC constitution and all rules of EC and any additional rules set by the competition.

BRONZE LEVEL SHOW

* Heritage Classes ** Prairie Cup Classes

Each English Dressage class will be split for Juniors and Open. Each Western Dressage Class will be split for Juniors, Amateurs, & Pros

LEVEL	TEST	CLASS NO. SATURDAY	CLASS NO. SUNDAY	COST PER TEST
Introductory Level*	A	101	201	\$20
	B	102	202	\$20
	C	103	203	\$20
Training Level*	1	104	204	\$25
	2	105	205	\$25
	3	106	206	\$25
First Level*	1	107	207	\$30
	2	108	208	\$30
	3	109	209	\$30
Second Level**	1	110	210	\$30
	2	111	211	\$30
	3	112	212	\$30
Third Level**	1	113	213	\$40
	2	114	214	\$40
	3	115	215	\$40
Fourth Level**	1	116	216	\$40
	2	117	217	\$40
	3	118	218	\$40
Advanced Level **	Prix St. Georges	129	229	\$50
	Or Intermediate 1	130	230	\$50
Para Test of Choice	Indicate test on Entry Form	131	231	\$50
Freestyle Test of Choice	Indicate Test on Entry Form	132	232	\$50
Western Style Dressage* (Non-Equestrian Canada Point Classes)	Intro Test C^	119	219	\$20
	Intro Test D^	120	220	\$20
	Basic Test C^	121	221	\$25
	Basic Test D^	122	222	\$25
	Level 1 Test A^	123	223	\$30
	Level 1 Test B^	124	222	\$30
	Level 1 Test C^	125	224	\$30
	Level 1 Test D^	126	226	\$30
	Level 2 Test A^	127	227	\$35
	Level 2 Test B^	128	228	\$35

- Mark which test on entry form
- Western Dressage Riders must note their WSDAC status on Entry Form (*Junior/Amateur/Pro*)
- ^Gaited entries are welcome to show with gaited tests, please let the show secretary know on entry
- Riders are Encouraged to nominate both themselves and their horses for Heritage Circuit and/or Prairie Cup Division through the SHF

ENTRY FORM

Regina District Dressage Association Centreline to Summertime

June 2-3, 2023

Entry Deadline: May 26, 2023

(Only one horse/rider combination per form)

Name of Rider: _____ Age of Jr Rider: MM /DD /YYYY

SHF #: _____ EC #: _____ Bronze or Higher Required WSDAC #: _____

Address of Rider: _____

Phone Number: _____ E-mail: _____

Name of Horse: _____ Age: _____ WSDAC #: _____

Gender: Mare / Gelding / Stallion Colour: _____ Breed: _____

Name of Owner: _____ Phone: _____

SHF #: _____ EC #: _____ E-mail: _____

Address of Owner: _____

Name/ EC # of Rider's Coach _____ OR - Rider is self-coached _____

Class Number	Class Description	Fees
Category (Circle)	JUNIOR / OPEN / AMATUER / PRO	
Admin Fee	**Mandatory	\$40.00
Warm Up	\$15 for a 15-minute or \$25 for 30 minute block on the Friday	\$
Drug Testing	**Mandatory	\$4.00
Stabling	**Mandatory \$70 for the weekend Friday-Sunday (includes stall clean out)	\$70.00
Tack Stall	\$40 for the weekend	\$
Shavings	Available for pre-purchase at \$10/bale \$10 x _____	\$
EC Dressage Levy	**Mandatory for English Dressage Tests Only	\$ 10.00
Membership Discount	RDDA & SDC members receive a \$10 discount	-\$
Show Number Rental	\$5 – Only if you need to rent a show number – must be returned	\$
#/Volunteer Fee	**Mandatory – will be refunded as long as shift fulfilled	\$30.00
Late Fee	\$40 Applies to entries received after Friday May 26, 2023	\$
TOTAL FEES		\$

Stabling: Individual _____ OR With: _____

I hereby certify that every horse, rider and/or driver is eligible as entered and agree for myself and my representatives to be bound by the Constitution and rules of Equestrian Canada at this competition. It is hereby recognized that all equestrian sports involve inherent risk and that no protective helmet or protective equipment can protect again all foreseeable injury. I hereby accept this risk and hold harmless EC, the competition, their officials, organizers, agents, employees and their representatives. The person responsible (PR) agrees to the release of any information on the entry form to EC. (A802.4)

I hereby certify that every horse listed on this entry form has met the requirements of Article A519, Vaccinations. See Rules of Equestrian Canada, Section A, General Regulations, Article A519, Vaccinations.

In the event that _____ (junior rider name) participates in an Equestrian Sanctioned competition where protective headgear is required for juniors, he/she will wear properly fitted and fastened approved headgear at all times while riding or driving at the event location. It is understood that juniors not meeting this requirement will not be allowed to compete at these competitions. (A802.6)

Must be signed by the person responsible.

Signature of person responsible

(Article A802.4 Person responsible for care/custody training and performance of the horse)

EC License #

ENTRY CHECKLIST

- ✓ Entry Form
- ✓ Fees must be paid in full to complete entry
- ✓ Photocopies/pictures of Equine Canada competition license(s), and Saskatchewan Horse Federation memberships included
- ✓ Copy of RDDA/SDC club membership (if applicable)
 - ✓ Copy of negative Coggins Test
 - ✓ Copy of Vaccination Certificate
 - ✓ Competition Waiver
 - ✓ Warm Up Time Request Form

COMPETITION WAIVER

THIS DOCUMENT WILL AFFECT YOUR LEGAL RIGHTS AND LIABILITIES
PLEASE READ CAREFULLY BEFORE SIGNING

I, the exhibitor/competitor do hereby acknowledge having received a printed copy of your official prize list and do hereby certify that all animals listed on the entry form on the reverse competition, are strictly in accordance with the rules and regulations in the Equestrian Canada Rule Book. I hereby certify that every horse and rider is eligible as entered and agree for myself and my representatives to be bound by the Constitution and Rules of Equestrian Canada at this Competition.

It is hereby recognized that all equestrian sports involve inherent risk and that no helmet or protective equipment can protect against all foreseeable injury. I further acknowledge the risks in riding and working around horses and that these risks can include bodily injury to both horse and rider resulting from normal use, competition, and schooling.

In consideration of being allowed to participate in this event, I hereby assume all risks and release and absolve the organizing committee of Regina District Dressage Association, Saskatchewan Horse Federation, Equine Canada and their officials, volunteers, officers, directors, agents, representatives, employees, and the owners and occupiers of the land upon which the competition is held of all responsibilities, liabilities, or claims of any nature and kind which I may have arising from participation in the event.

I hereby declare that in making this entry that I have read and fully understand and agree to the terms and conditions stated herein and that it is binding upon my executors, heirs, and assigns.

Signature of Rider _____ Date _____

Signature of Owner/Agent _____ Date _____

If the rider is under the age of 18 years, the parent/guardian must also sign below.

I acknowledge as Parent/Guardian of _____ that I have read and fully understand and agree to the terms and conditions stated herein on behalf of _____.

Parent/Guardian Signature _____ Date _____

REGINA DISTRICT DRESSAGE ASSOCIATION WARM UP TIME REQUEST FORM

Friday, June 2, 2023

Rules/Regulations:

1. Fifteen-minute time blocks may be purchased for \$15 or 30 minutes for \$25. Payment must be attached with the warm up request form. Cheques made payable to RDDA.
2. Time slots can be purchased by a single rider, or by a group of riders. **Groups will be charged per time slot used, rather than being charged as individual riders.**
3. All horse/riders must be registered with the competition to be eligible for a warm-up time.
4. Timeslots are assigned in the order in which entries are received.
5. RDDA will not be responsible for grouping people together to share the ring.
6. Each horse/rider combination is only allowed to book 1 fifteen-minute time slot. A rider can book more than 1 fifteen-minute time slot if riding a different horse in each time slot.
7. All warm-up requests will be scheduled on a first come, first serve basis.
8. All riders must be a member of the SHF.
9. Riders will be notified of warm up schedule the Wednesday before competition via email.
10. Professional etiquette must be maintained by all competitors and coaches.
11. No riders will be allowed to ride in or around the dressage ring during the warm-up time without purchasing a warm-up block of time.

RIDER NAME: _____ SHF# _____

PHONE# _____ E-MAIL: _____

For more riders please list on separate piece of paper.

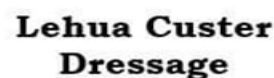
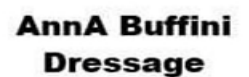
Please indicate your 1st, 2nd, and 3rd choice of time slots. Please indicate your earliest time possible as one choice to help us meet everyone's needs.

1:30	3:00	4:30	6:00
1:45	3:15	4:45	6:15
2:00	3:30	5:00	6:30
2:15	3:45	5:15	6:45
2:30	4:00	5:30	7:00
2:45	4:15	5:45	

PLATINUM SPONSORS



GOLD SPONSORS



FRIENDS OF THE CLUB

